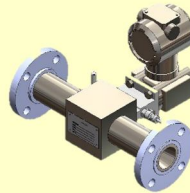


**idFlow** a division of idSolutions, is committed to providing innovative solutions for your flow and level measurement requirements through teaming our strong technical support group with your dedicated professionals.

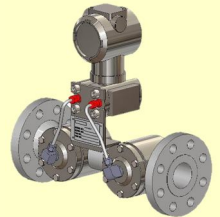
**idFlow Wedge Meters**

- Meet customer requirement and adhere to ASME B31.1 and B31.3
- For extreme process conditions
- Bi-directional by design



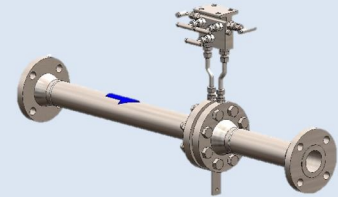
**idFlow Nistar Series**

- Integral assembly
- Eliminated leak paths and impulse line error



**idFlow Orifice Plates and Assemblies**

- Designed in accordance with client specified standards including AGA, ISA, ASME, and ISO
- Low cost solutions for clean, non-abrasive fluids



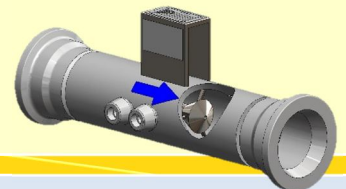
**idFlow Venturi**

- Built to ASME MFC-3M-2004, ISO 5157, B31.1, and B31.3 per client specifications

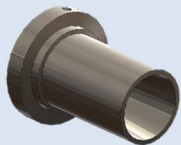


**idFlow Cone**

- Built ASME B31.1 and B31.3 per client specifications



**Other idFlow Products include Nozzles and Pitots**



- Designed in accordance with client specified standards



**idFlow Services**

- Instrument dimensional drawings
- Flow calculations
- NDE as per code or client requirements
- Calibration services on liquid or gas traceable to NIST

**Primary Flow Elements**  
 Engineered Designs for Flow Applications

Contact your local Representative: