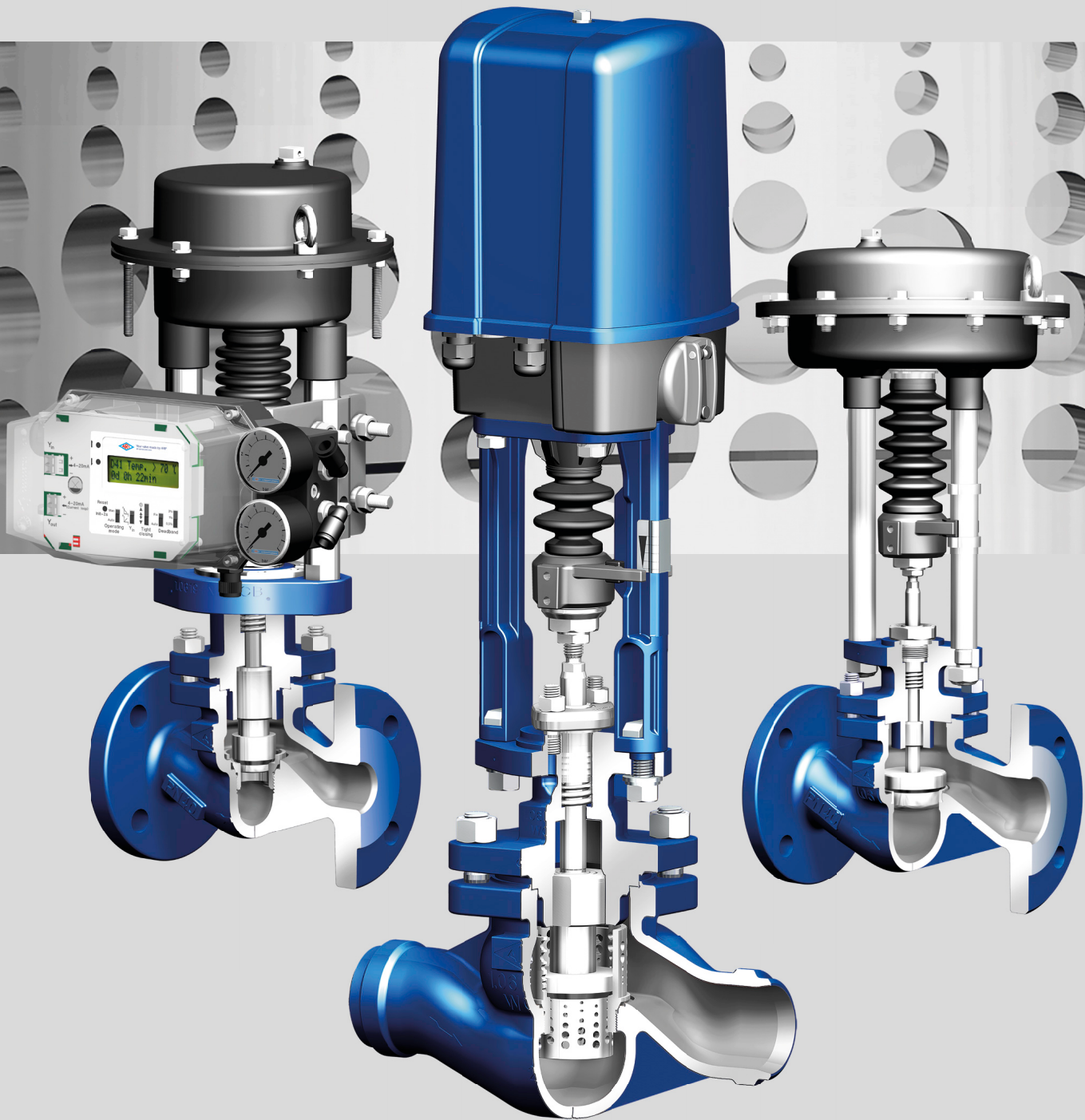


# STEVI®

## CONTROL RELIABLY.

INDIVIDUAL. PRECISE. DURABLE.



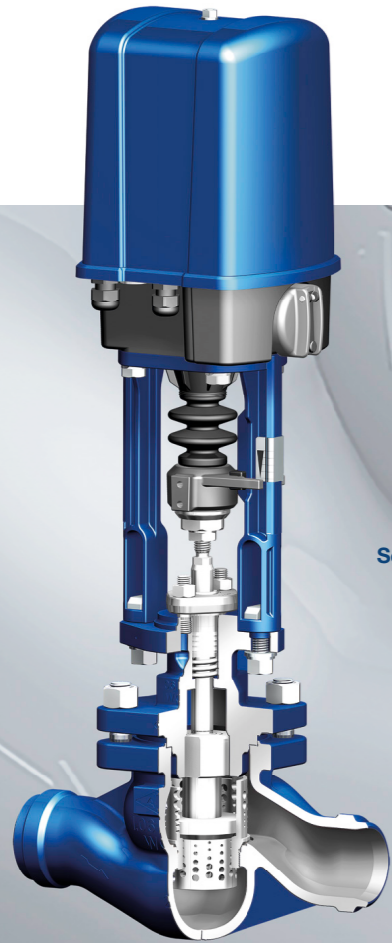
Your valve made by ARI®  
[ari-armaturen.com](http://ari-armaturen.com)

# STEVI® Pro (Straightway Valves, Series 470/471/422/462)

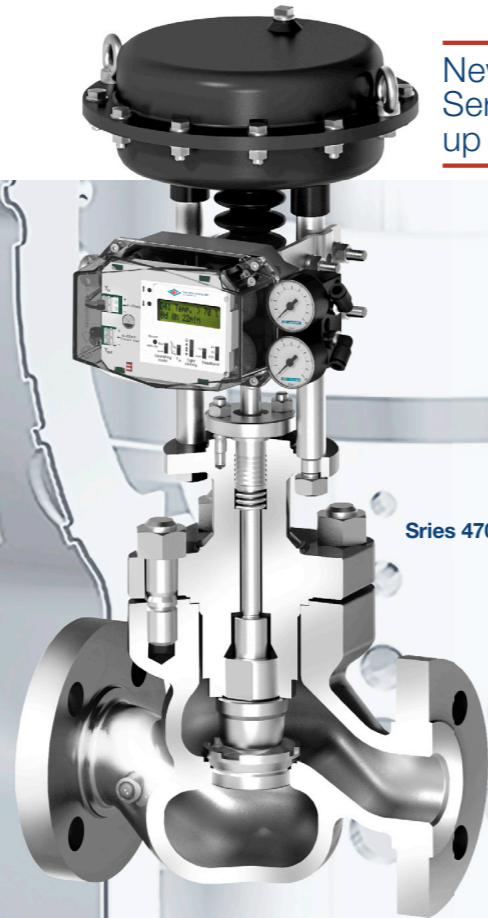
The high-performance control valve for professional control and critical applications

# STEVI® Vario (Straightway Valves, Series 448/449)

The variable, compact control valve



Series 470



Sries 470

New from ARI!  
Series 470 now  
up to PN 160!



Series 448



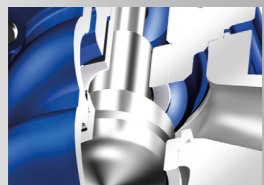
Series 448

- Precise due to high control accuracy (optimised flow paths and characteristic curve).
- Variable: at least 5 reducible Kvs values.
- Variable: stem seal options (PTFE V-ring unit, PTFE packing, graphite packing, stainless steel bellows seal, EPDM sealing).
- Variable: changeable trim.
- Minimal noise: multi-stage trim (optional).
- Safe: blow-out proof stem.
- Safe: shaft guided plug.
- Safe: two-ply bellows seal (optional).
- Long life: precision stem guiding.
- Solutions for critical operating conditions.
- Flexible: wide range of applications (very high differential pressures up to max. nominal pressure).

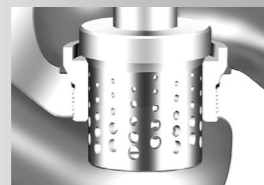
**Plug design:** Parabolic plug, optional V-port or perforated plug (each optional: pressure balancing)  
**Nominal diameter:** DN 15-250 / NPS 1"-8"  
**Nominal pressure:** PN 16-40 / ANSI 150 / ANSI 300 / ANSI 600  
**Actuators:** Electric or pneumatic  
**Body materials:** e.g. EN-JL1040, EN-JS1049, 1.0619+N, SA216WCB, 1.4408, 1.4581  
**Flow media:** e.g. hot water, steam, gas, refrigerant, brine, etc.

- Long life: stem seals already proven millions of times over, service life now further extended (PTFE V-ring sealing units and EPDM linings).
- Optimum handling: actuator can be rotated 360°.
- Flexible: changeable, variable trim (at least 4 Kvs values as well as multiple flow characteristics and plug designs).
- Precise and durable: vibration is prevented even at high differential pressures (stable shaft guiding).
- Easy handling: small footprint and reduced weight (low height).
- Economical: very low air consumption (smaller pneumatic actuators possible).

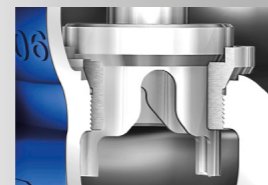
**Plug design:** Parabolic plug / perforated plug  
**Nominal diameter:** DN 15-100 / NPS ½" – 4"  
**Nominal pressure:** PN 16-40 / ANSI 150  
**Actuators:** Electric or pneumatic  
**Body materials:** e.g. EN-JL1040, EN-JS1049, 1.0619+N, 1.4408, SA216WCB, SA351CF8M  
**Flow media:** e.g. warm water, hot water, saturated steam, overheated steam, gas, coolant, cooling brine, refrigerant, thermal oil, etc.



Safe even under exacting conditions (blow-out proof stem / shaft guided plug).



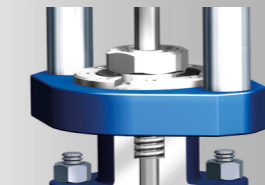
Flexibility: variable in situ replacement of the trim – stem, plug (here: perforated plug) and seat ring.



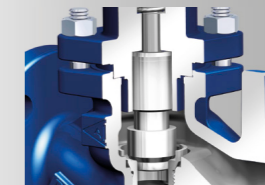
High performance due to double guiding (V-port plug and perforated plug).



Stable shaft guiding for precision and durability.



Rotatable upper part for optimum handling.



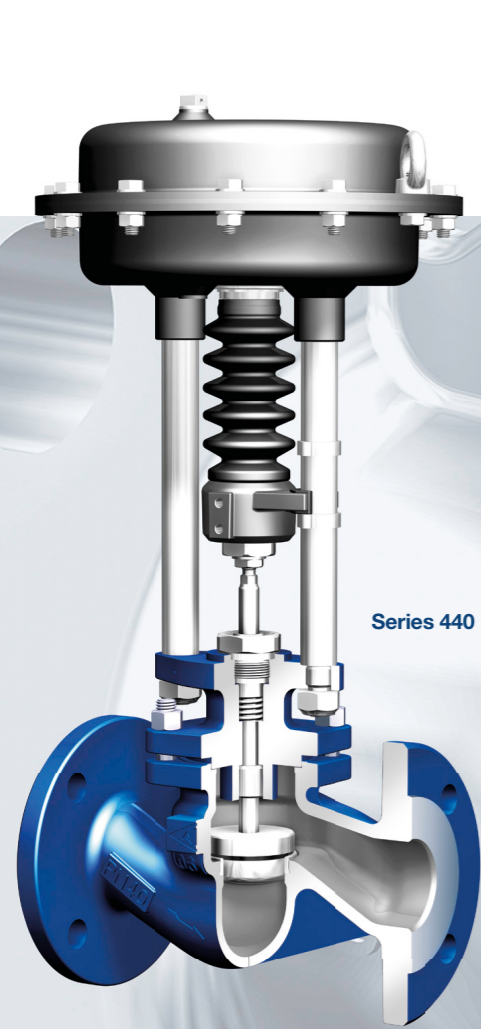
Screwed seat ring provides flexibility.

# STEVI® Smart (Straightway Valves, Series 440/441/425/426)

The classic standard valve for universal applications

# STEVI® Smart (3-Way Valves, Series 450/451/423/463)

Precision mixing/diverting



Series 440



Series 441



Series 450



Series 451

- 50:1 rangeability for precision and high performance (inherent rangeability 40:1).
- Variable: stem seal options (PTFE V-ring unit, PTFE packing, graphite packing, stainless steel bellows seal, EPDM sealing).
- Long life: precision stem guiding.
- Safe: two-ply bellows seal (optional).

**Plug design:** Parabolic plug, optional V-port plug (each optional: pressure balancing DN 65) / equal-percentage or linear characteristic

**Nominal diameter:** DN 15-500

**Nominal pressure:** PN 16-40

**Actuators:** Electric or pneumatic

**Body materials:** e.g. EN-JL1040, EN-JS1049, 1.0619+N, 1.4408

**Flow media:** e.g. cooling water, brine, warm water, hot water, steam, gas, refrigerant, thermal oil, etc.

- 30:1 rangeability for precision and high performance.
- Variable: reducible Kvs values.
- Variable: stem seal options (PTFE V-ring unit, PTFE packing, graphite packing, stainless steel bellows seal, EPDM sealings).
- Variable and economical: two screwed seat rings (optional).
- Long life: stable plug guidance.
- Long life: precision stem guiding.
- Safe: two-ply bellows seal (optional).

**Plug design:** Mixing plug / diverting plug

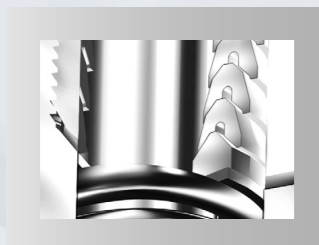
**Nominal diameter:** DN 15-300

**Nominal pressure:** PN 16-40

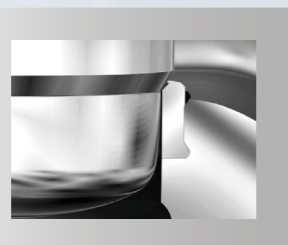
**Actuators:** Electric or pneumatic

**Body materials:** e.g. EN-JL1040, EN-JS1049, 1.0619+N, 1.4408

**Flow media:** Cooling water, brine, warm water, hot water, refrigerant, thermal oil, etc.



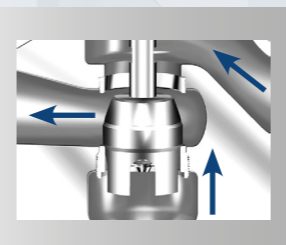
Stem seal options for flexibility (here: PTFE V-ring units).



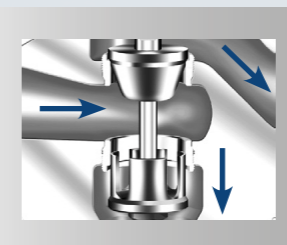
Economical due to rolled seat ring.



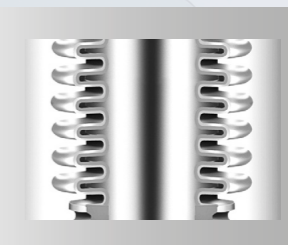
Optional pressure balancing plug reduces the required actuator forces and enables increased efficiency.



Variable: mixing plug.



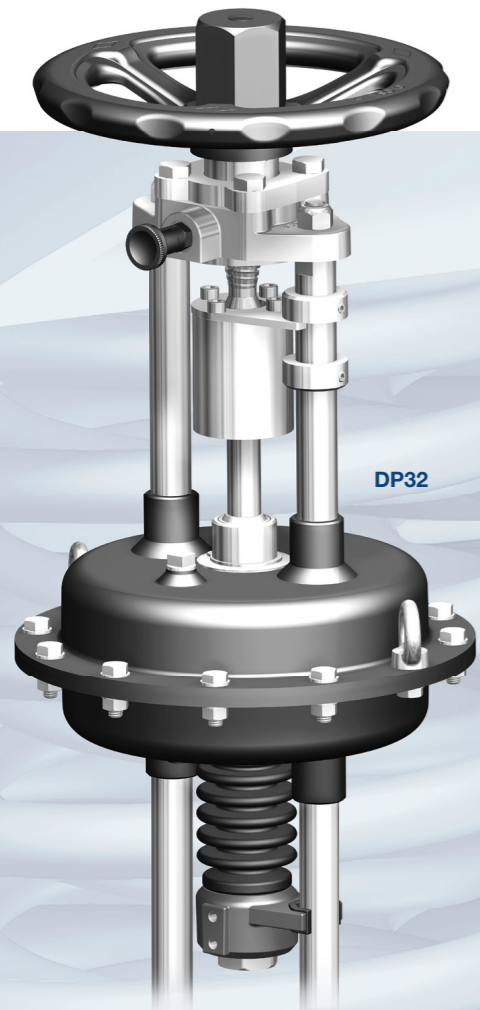
Variable: diverting plug.



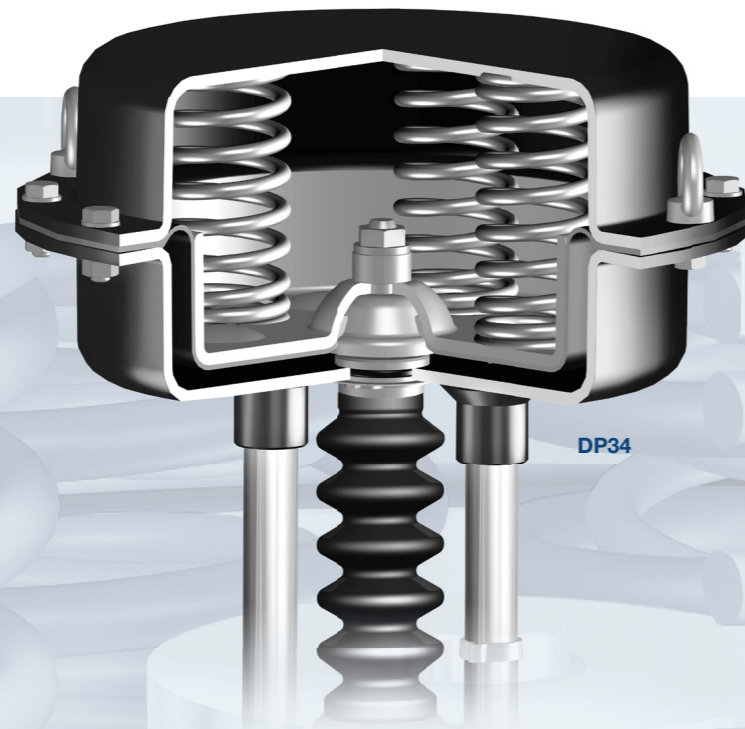
Safe: two-ply bellows seal (optional).

# ARI-DP PNEUMATIC ACTUATORS

# ARI-PREMIO® AND PREMIO® PLUS 2G ELECTRIC ACTUATORS



DP32



DP34

**STEVI® Pos**  
The digital  
electropneumatic  
positioner



PREMIO®



**PREMIO® Plus 2G**  
optionally also with  
LED status display

**myPREMIO**  
The new App for  
communication with the  
ARI-PREMIO®-Plus 2G



## High performance, practical, economical

- High performance: broad spring rangeability (higher closing forces).
  - Practical: reversible operating direction.
  - Economical: favourable size / performance ratio.
  - Variable: wide range of accessories (positioners, solenoid valves, limit switches, etc.).
  - Sizes up to 2800 cm<sup>2</sup> diaphragm area (DP 35)
  - Durable even in aggressive environments: corrosion-resistant design (optional).
  - Added safety through manual override (optional)
- Nominal diameter:** Diaphragm area 80-2800 cm<sup>2</sup>  
**Actuating force:** 490-83,000 N  
**Max. permitted air supply pressure:** 6 bar  
**Operating modes:** Spring closes / air supply pressure closes body seat

## Product benefits of the digital electro-pneumatic positioner STEVI-POS®

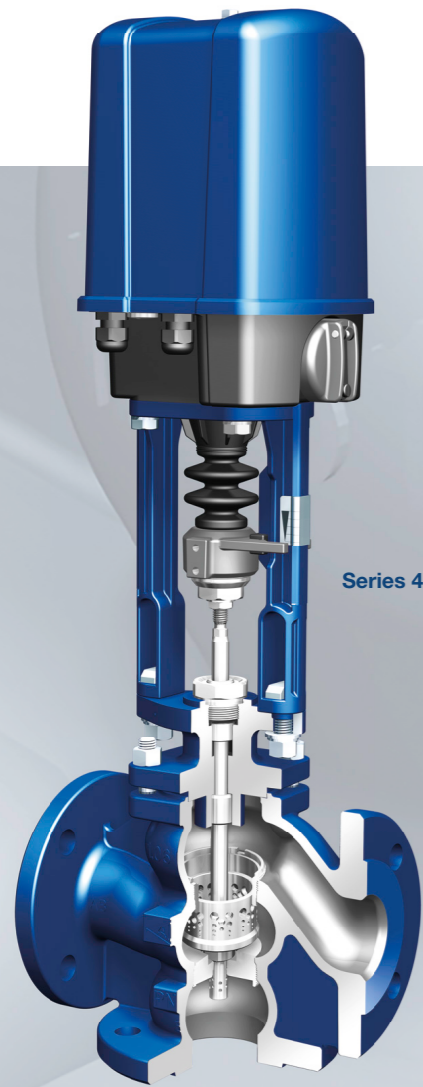
- Compact design
- Quick initialisation and easy operation
- Contactless Hall sensor for position determination means the positioner is durable, vibration-resistant and wear-free.
- Proven piezo technology enables low air consumption, leading to higher efficiency as well as substantial savings.
- Captive hood screws
- Simple diagnostics
- Optional accessories
- Pressure gauge block for indicating actuating pressure.
- 4-20 mA feedback via an analogue output card.

## Reduced power consumption, optimised handling, extended lifetime

- Optimal safety and reliability: high operating temperature protection in duty types S3 80% ED / max. 1200 c/h (+70° C) acc. to EN 60034-1.
  - High performance: optimised gear transmission and improved load cut-off.
  - BLDC motor: significantly reduced power consumption, exceptionally smooth and quiet running due to circular rotating field, high duty classification (ED) even at high actuating forces because self-heating of the motor is restricted to a minimum.
  - Variable control speeds.
- Added value with PREMIO®-Plus 2G:**
- Self-initialisation feature.
  - User friendly operator panel.
  - Positioner: Freely selectable analogue control signal (0 to 10 V or 4 to 20 mA).

- Economy Function for even better durability with more efficient, low-wear conversion of control signals.
  - Variable speed control for extended gear lifetime.
  - High durability and precision because small positional deviations are approached at low speed.
  - Optional: Version with fail-safe function.
- Actuating force:** 2.2 kN, 5 kN, 12 kN, 15 kN, 25 kN  
**Permissible ambient temperature:** -20° C to +70° C
- Compatible with a wide voltage range from 110 to 240 V AC 50/60 Hz (PREMIO®/PREMIO® Plus)
- Other actuators available on request!**

# “EVEN MORE STEVI® DIVERSITY ...”



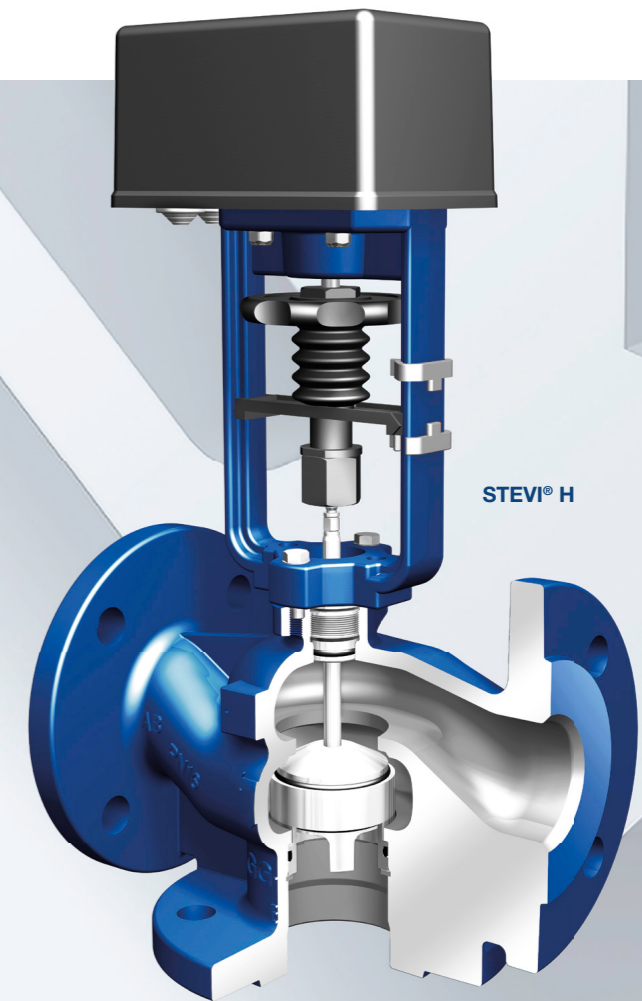
Series 453



Series 415



Series 405/460



STEVI® H

## STEVI® 453

Feedwater control valve with integrated pump spill-back

- Permanently reliable because the pump is protected (guaranteed supply of feedwater – integrated pump spill-back).
- Variable: Kvs values adapted to the quantities required.
- Long life: trim optimised for critical operating conditions.

Applications: Boiler construction / plant manufacturing

## STEVI® 415

Automatic blow-down valve – e.g. for steam boilers or autoclaves

- Optimum handling: compact design.
- Flexible: accessories adapted to the blow-down process (e.g. limit switches, solenoid valve, time delay relays, etc.).
- Optional: operation by means of a separate lever (for quick and easy manual control).

Applications: Boiler construction

## STEVI® 405/460

Automatic stop valve (with electric or pneumatic actuator)

- Long life: precision stem guiding.
- Safe: two-ply bellows seal (optional).
- Variable: stem seal options (PTFE V-ring unit, PTFE packing, graphite packing, stainless steel bellows seal, EPDM sealings).

Applications: Industry, chemicals, shipbuilding

## STEVI® H

Lightweight, compact valve

- Precise: optimised control accuracy even at low flow rates (rangeability 30:1).
- Economical: maintenance-free, frictionless EPDM sealing.
- Variable: available with cast iron flanges or red brass sockets.
- Flexible: intelligent PACO® electric actuators.

Applications: HVAC and industry (for low differential pressures and low flow velocities)

# STEVI®

Reliable, precise, individual for more than 40 years ...



## ... Control valve technologies for control and mixing/diverting

- More than forty years experience in the development and sale of advanced control valve technologies.
- Your strong service partner – with 16 branches and sales partners in more than 60 countries worldwide.
- A sharp focus on our customers, competent advice and short delivery times.

- All ARI products are developed in keeping with the very latest design standards, tested under the most rigorous conditions on our in-house experimental facilities, manufactured with the highest possible precision and subjected to continuous in-process quality controls.
- Comprehensive design know-how, for example through ARI-myValve®, our user-friendly sizing software.

- ARI products are manufactured at three different locations – all of them in Germany. Benefit for you: quality “Made in Germany” – certified acc. to DIN ISO 9001. Numerous product approvals, e.g. Det Norske Veritas and Lloyd’s Register Quality Assurance.
- High degree of vertical integration for flexibility, speed and professionalism.
- What sets us apart: all valves AND all electric and pneumatic actuators are developed and manufactured in-house.

- We make it as simple as possible for you to order – by recommending valve-actuator combinations tailored to your individual needs.

If you too would like to profit from ARI’s extensive know-how and experience, just give us a call. You are also welcome to visit one of our regular training events in Germany or abroad!

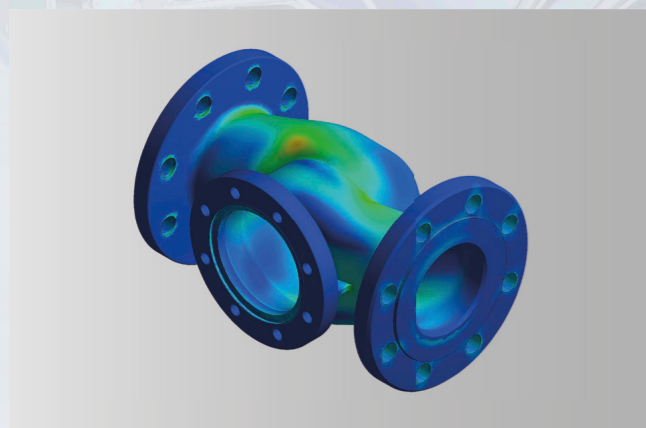
**Expert control made by ARI – profit from a wide array of services and a strong partnership!**



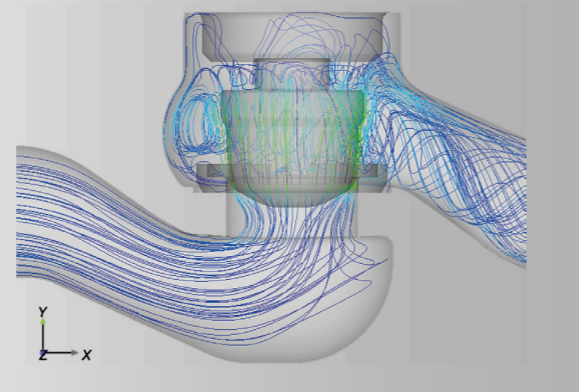
# MODERN DEVELOPMENT METHODS, TESTED IN OUR OWN EXPERIMENTAL LAB

# HIGH-PRECISION MANUFACTURING

ARI's own test bench.



**Finite element analysis**  
The finite element analysis (FEA) is a numerical calculation technique that is used to simulate stresses and their distribution. The aim is to achieve the required strength at pressure load levels in combination with an optimal weight and a flow friendly shape.



**State-of-the-art flow simulations**  
The twofold objective of uniform flow and high flow capacity is realised with the aid of special flow software. The software simulations enable the flow velocity, flow direction and pressure distribution to be visualised. Due to the optimised geometry, turbulences and pressure loss are reduced to a minimum.



Optimum handling: easy start-up of the PREMIO® / PREMIO® Plus 2G.

## Modern technologies

are the key to optimal safety and reliability. Our products are manufactured at three different locations – all of them in Germany – promptly and according to rigorous quality criteria.

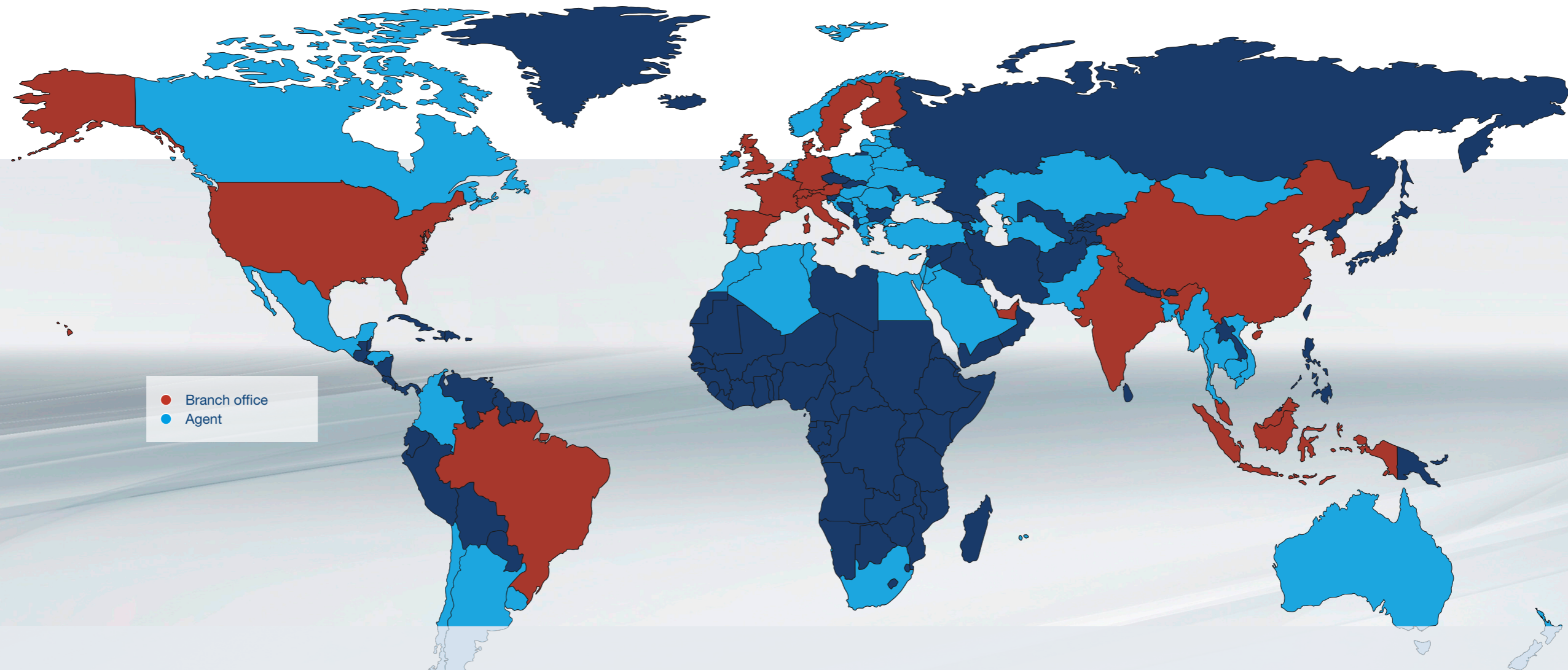
High performance machining centres, automated assembly cells, programmable assembly robots and a highly qualified team of staff are vital prerequisites of top-quality product solutions specially tailored to your individual requirements.

**The benefit for you: Optimal reliability and efficiency.**

# CONTROL – ISOLATION – SAFETY – STEAM TRAPPING – ENGINEERED SYSTEMS



Your strong partner – in more than 60 countries worldwide



## We Love Technology

Highly qualified engineers develop the products of the future using the latest methods. Already in the selection of our suppliers we set the highest quality standards and thus guarantee already with the materials used a high level of quality. The same applies to our production technologies, which are always one step ahead thanks to our many years of know-how and thus leave no room for error.

## Your Local Partner - Worldwide!

Our broad-based sales team is your competent local partner. With sales partners in more than 60 countries worldwide and our own subsidiaries in Austria, Switzerland, Denmark, Great Britain, France, Spain, Italy, Finland, Sweden, the USA, Brazil, India, China, Malaysia, Singapore, South Korea and Dubai, we are always available for you. A powerful partner!

## Customized Product Solutions

20,000 products in more than 200,000 variants offer you almost unlimited possibilities depending on the area of application and thus individual product solutions made to measure. Control valves, pressure reducers, overflow regulators, self-operated temperature regulators, butterfly valves, shut-off valves, safety valves, steam traps, measuring technologies and systems such as pressure reducing stations, heat exchangers and condensate

recovery and lifting systems. In this way, we guarantee you maximum flexibility - whatever the application.

## Quality is our Claim

As a developer, manufacturer and distributor of valves, actuators and engineered systems, we are certified according to DIN EN ISO 9001:2015. The continuous quality monitoring in all phases of production is documented in about 20 system approvals from acceptance or classification societies such as Det Norske Veritas, Lloyd's Register Quality Assurance, Germanischer Lloyd, SELO (China), CCS (China), Korean Register, Russian Maritime Register of Shipping, EAC, Rostechnadzor (Russia) and many more.

## Sustainability

ARI-Armaturen operates a certified environmental management system according to DIN EN ISO 14001:2015 as well as an energy management system according to DIN EN ISO 50001:2018. Sustainability as well as a resource-saving handling have thus become a top priority for us.

Quality made by ARI.





# ARI product diversity

## Control



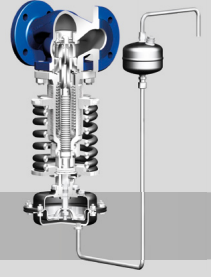
**Control valves**  
STEVI® Pro  
(BR 422/462, 470/471)



STEVI® Vario  
(BR 448/449)



STEVI® Smart (BR 423/463,  
425/426, 440/441, 450/451)



**Control without auxiliary power**  
PREDU® / PREDEX® /  
PRESO® / TEMPTROL®

## Isolation



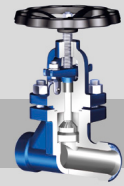
**Process Valves**  
ZETRIX®  
High Performance-Valves  
ZEDOX®



**Butterfly valves**  
ZESA®/GESA®/ZIVA®



**Bellows sealed valves**  
FABA® Plus, FABA® Supra I/C



**Stop valves with gland seal**  
STOBU®

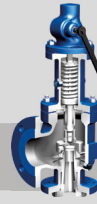
## Safety



**Safety valves (DIN)**  
SAFE



**Safety valves**  
SAFE TCP



**Safety valves (API 526)**  
ARI-REYCO®



**Safety valves (ANSI)**  
ARI-REYCO® RL-series

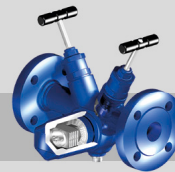
## Steam trapping



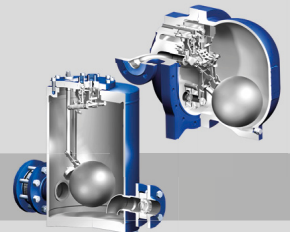
**Steam traps CONA®**  
(mechanical ball float /  
thermostatic bimetallic  
and membrane /  
thermodynamic),  
**monitoring systems**  
CONA® Control



**Manifolds**  
CODI® for collecting  
and diverting purpose



**Steam traps with multi-  
valving technology CONA®**  
"All-in-One" (incl. stop valve,  
inside strainer, back-flow  
protection, drain valve)

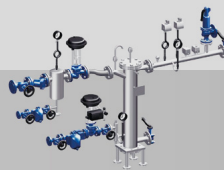


**Mechanical pump systems**  
CONLIFT®, CONA® P

## Engineered Systems



e.g. pressure reducing station  
PREsys®



e.g. heat exchanger  
ENCOSys®



e.g. condensate return  
system CORsys®



e.g. feedwater tank  
with deaerator dome

**Profit from diversity made by ARI.**  
**Please don't hesitate to ask for more information!**



Your valve made by ARI®  
ari-armaturen.com