

Vector CAG has the capability to become your one stop shop for all types of flushing rings! Vector CAG can design, provide CAD, manufacture, test, and provide documentation for all assemblies! Next time you're in need of a flushing ring, contact your local sales rep to get a custom assembly! Lead times from as little as 4 working days!

WIDE RANGE OF MATERIALS

- Dual Certified AISI 316(L)SS
- Monel – Alloy 400
- Hastelloy – Alloy C-276
- Inconel – Alloy 625 / 825
- Duplex F1
- Super Duplex F55
- Titanium
- PTFE

Flushing rings just got that much easier! No more sourcing material to then manufacture the assembly. Get it all from Vector CAG!

Standard Flushing Ring with 2X Flush Ports



Without Bolt Holes



With Bolt Holes

FULL TRACEABILITY

- Standard NACE MR0175

FLUSHING RING SELECTION GUIDE

1. Process Connection

- Flange Size
- Flange Pressure Rating
- With or Without Bolt Holes

2. Material of Construction

3. Flushing Port

- Number of ports • Type of Port
- Size of Port

4. Nipples (Optional)

- Pipe Schedule
- Length

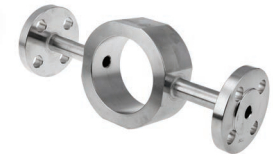
5. Flange End (Optional)

- Flange Size
- Flange Rating

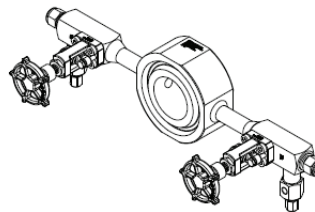
6. Valve End (Optional)



Welded Nipples and Valves



Welded Nipples and Flanges



All Welding is Very Clean and Aesthetic!

Flushing Ring in HF Process

